

# OHS eNews

## October 2018

---

### Focused inspection programs

This fall, OHS will conduct focused inspections to:

- protect workers' OHS rights,
- enhance employers' awareness of their responsibilities, and raise awareness of work site hazards, and
- increase compliance with OHS laws.

The priorities and timeframes for focused inspections will be announced, but individual work sites will not be identified in advance. Go [here](#) for more information.

### OHS information for workers and employers

What are some of the highlights of the OHS legislation? What do workers and employers need to know? Resources to help guide you through some of the legislative requirements can be found at on the [OHS Resource Portal](#).

### Health and safety webinars

Improve your understanding of the new OHS rules by participating in interactive webinars or by watching a prerecorded version. Register [here](#) for any of the following or click below for the videos:

- [Harassment and violence in the workplace](#)
- [Health and safety committees and representatives](#)
- [OHS Act changes](#)
- [OHS requirements for farms and ranches](#)

### OHS Innovation and Engagement (I&E) Grants

[Applications](#) are now open for [I&E grants](#) that fund non-profit and public sector organizations for projects aimed at improving OHS awareness and knowledge. Deadline for submission is Oct. 15, 2018.

### Cannabis legalization in Alberta

Learn the [rules and regulations](#) that will come into effect when the federal government legalizes recreational cannabis on Oct. 17, 2018.

#### Contact OHS

1-866-415-8690 (toll-free) 780-415-690 (Edmonton)

TTY: 780-427-9999 (Edmonton)

TTY: 1-800-232-7215

[Report an Incident](#)

[PSI Online Reporting](#)

## Incidents recently reported to the OHS Contact Centre

These are summaries of selected work-related incidents recently reported to Alberta OHS. The summaries are based on information obtained as soon as possible after the incident. They are preliminary and subject to change. Because they are being investigated by the employers involved, no additional information will be provided.

### Worker lacerates thumb

A worker was in the process of cutting wood using a hand held circular saw. The saw kicked back and cut the worker's left thumb. The worker was admitted to hospital. *Construction and Construction Trades*

### Worker falls from ladder

A worker was climbing a 6-metre portable ladder that was leaning against a vessel when the ladder began to slide sideways. The worker fell resulting in serious injuries and was admitted to hospital. *Manufacturing and Processing*

### Worker pinned

A worker was removing the sling after a crane lowered a steel beam into place. The beam rolled and pinned the worker. The worker was admitted to hospital. *Construction and Construction Trades*

### Worker injures eye

A worker was using a grinder with a wire wheel attached. A wire bristle came free and entered the worker's eye. The worker was admitted to hospital. *Oil and Gas*

### Worker cuts fingers

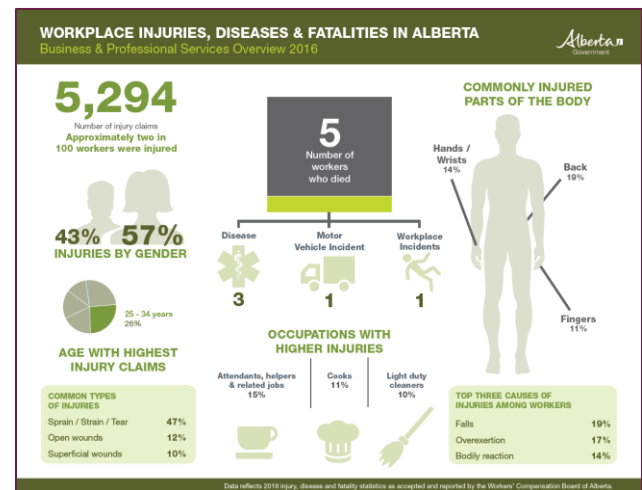
A worker was cutting meat with a large band saw. The worker cut off the top portion of their fingers. The worker was admitted to hospital. *Wholesale and Retail Trade*

#### Quick Links

- [AB OHS Legislation](#)
- [Partnerships in Injury Reduction](#)
- [Workplace incidents](#)
- [Motor vehicle incidents](#)
- [Occupational diseases](#)
- [Alberta Queen's Printer](#)

## Infographics for 2016

Find them [here](#).



### Fatalities accepted by WCB-Alberta (January 1 to June 30)

